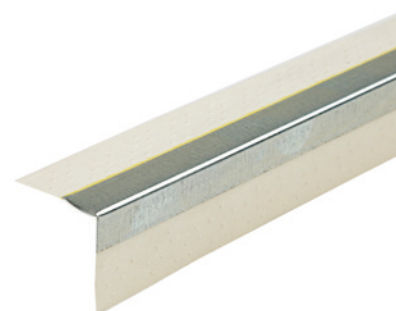


## Product Data Sheet

# Knauf Las Vegas B2 Internal Bead



**Knauf Las Vegas B2 Internal Bead is a paper faced internal bead to create 90° outside corners on any thickness of Knauf plasterboard. For indoor use only.**

### Areas of Application

External corners of drywall partitions.

### Compliance Standards

EN 14353:2017

### Key Benefits

- Creates protective, sharp corners
- Provides solutions for uneven or curved corners
- Paper tape 'nose coating' resists scuffing and fuzzing from knives and sanding

### Performance Data

Reaction to Fire (R2F)	Flexural Strength (F)	Dangerous Substances (DS)
E	Pass	NPD

### Technical information

Dimensions and Weights						
Width (mm)	Length (mm)	Depth (mm)	Colour	Weight (kg per piece)	Material Number	
9.5 metal / 16 paper	2600	9.5 metal / 16 paper	Silver/Cream	0.36	547280	
9.5 metal / 16 paper	3000	9.5 metal / 16 paper	Silver/Cream	0.40	547314	

## Sustainability

### Recyclability

Recyclable

### Substances of very high Concern (SVHC)

At the time of publication, under REACH UK and REACH EU regulations this product contains no SVHC. For more information please consult the Safety Data Sheet.

### Volatile Organic Compound Content (VOC)

At the time of publication, under REACH UK and REACH EU regulations this product contains no VOCs.

## Storage and Handling

Store away from humidity in a dry area. There are no special instructions recommended for handling these products.

## Packaging

Packaged in a cardboard box which can be recycled.

## Service Life

The service life is up to 50 years, depending on the area of use, exposure and state of maintenance.

## Disposal/Repair

Separate metal from any non-metal components and recycle in accordance with local authority requirements.

European Waste Catalogue code: 17 08 02

## Health & Safety

Safety glasses and gloves should always be worn when cutting metal.

## Application / Installation

Before installation, measure and cut the las vegas bead to size. The bead can be pressed firmly into position on a corner covered with at least 1mm of jointing compound, following the steps in BS 8000-8:2023, with the paper facing outwards. A roller can be used to gently apply pressure. Remove excess joint compound and smooth with a trowel.

## Additional Documentation

[Declaration of Performance CE](#)



### Customer Service

UK Tel: 0800 521 050  
Eire Tel: 01 4620739  
Email: [cservice@knauf.com](mailto:cservice@knauf.com)

### Technical Service

0800 521050 (option 2)  
Live Webchat 09:00 -17:00  
[technical-uk@knauf.com](mailto:technical-uk@knauf.com)

### Website

[www.knauf.co.uk](http://www.knauf.co.uk)  
[www.knauf.ie](http://www.knauf.ie)

### Address (UK)

Knauf  
Kemsley Fields Business Park  
Sittingbourne  
Kent ME9 8SR

### Address (Ireland)

Knauf  
87 Broomhill Road  
Tallaght  
Dublin 24  
D24 WR85

The information given in this publication is believed to be current and accurate as at the date of publication, but no warranty, express or implied is given. Updates will not be automatically issued.

© Copyright Knauf 2024

Creation Date: 07/06/2024  
Revision Reference: 001  
Revision Date: 07/06/2024