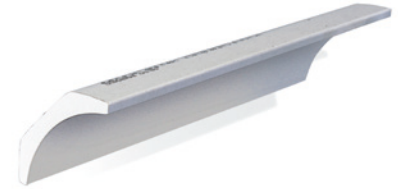


Product Data Sheet

Knauf Cove



Knauf Cove is a decorative plaster moulding with a paper face for direct application of paint finishes.

Areas of Application

For use along the internal angles of the wall and ceiling.

Compliance Standards

BS EN 14209:2017

Key Benefits

- Quick and simple installation
- Paper face for easy decoration
- Can be fixed with Knauf Cove Adhesive

Performance Data

Reaction to Fire (R2F)	Dangerous Substances	Yield Strength (Flexural)
A2-s1-d0	NPD	Pass

Technical information

Dimensions & Weights			
Width	Length	Weight (kg/lm)	Material Number
127	3000	4.8	258395
127	3600	3.5	258399
90	3000	2.6	258397

Sustainability

Total Recycled Content

15-20%

Recyclability

Fully recyclable

Substances of very high Concern (SVHC)

At the time of publication, under REACH UK and REACH EU regulations this product contains no SVHC. For more information please consult the Safety Data Sheet.

Volatile Organic Compound Content (VOC)

At the time of publication, under REACH UK and REACH EU regulations this product contains no VOCs. For more information please consult the Safety Data Sheet.

Storage and Handling

Store in dry conditions on flat ground and stack pallets no more than two high. Pallets should be moved using a fork lift truck or hydraulic trolley, care should be taken to ensure that the machinery is safe and that the operator is trained and competent. Refer to the HSE Manual Handling Operations Regulation for best practice guidance.

Packaging

Product is supplied shrink wrapped on wooden pallets.

Disposal/Repair

Disposal should be in accordance with local authority requirements. Keep gypsum based products in their own recycling area to minimise contamination from non-gypsum based products.

European Waste Catalogue code: 17 08 02.

Health & Safety

Please refer to our Safety Data Sheet for guidance on Personal Protection Equipment required for the handling and installation of this product.

Application / Installation

Before fitting coving, prepare the surfaces by filling any gaps, sanding uneven areas, or applying a skim coat of plaster to create a smooth and even base.

Ensure the marked area is free from dust and any loose plaster. If applying coving to fresh plaster or a very porous surface, then apply an adhesive such as Knauf Betokontakt or an alternative PVA adhesive, and allow it to dry before installing coving.

Score the area in between your marking with a sharp knife. This will help the adhesive to bond firmly.

90mm Cove: Make a pencil line 62.5mm, down from the ceiling, on wall; and 62.5mm, out from wall, on the ceiling.

127mm Cove: Make a pencil line 83mm, down from the ceiling, on wall; and 83mm, out from wall, on the ceiling.

Remove any wallpaper and all loose material from the marked area. Measure and mark position of the corner on the cove. Always mark the cove on the bottom edge.

Use a tool such as a cove mitre tool to cut the coving to size.

Apply cove adhesive to the rear of each piece of measured cove to form a continuous ribbon of adhesive along the wall and ceiling edge. Gently squeeze cove into position applying even pressure along the cove edges to squeeze out excess adhesive. Work surplus adhesive into any gaps between the cove, wall and ceiling; and between the two halves of the corner mitres.

Consider using fixings, such as screws or nails, in addition to adhesive for added stability and support at 600mm intervals.

Clean off any remainder promptly with a damp sponge. Allow to dry thoroughly. Rub down filled joints with fine sand paper for a smooth finish. Decorate as desired.

Additional Documentation

[Declaration of Performance UKCA](#)

[Declaration of Performance CE](#)

[Safety Data Sheet](#)



Customer Service

UK Tel: 0800 521 050
Eire Tel: 01 4620739
Email: cservice@knauf.com

Technical Service

0800 521050 (option 2)
Live Webchat 09:00 -17:00
technical-uk@knauf.com

Website

www.knauf.co.uk
www.knauf.ie

Address

Knauf
Kemsley Fields Business Park
Sittingbourne
Kent ME9 8SR

The information given in this publication is believed to be current and accurate as at the date of publication, but no warranty, express or implied is given. Updates will not be automatically issued.
© Copyright Knauf 2024

Creation Date: 26/04/2024
Revision Reference: 001
Revision Date: 26/04/2024

Build for the world we live in